



HTW 80

1-1/2" x 1-1/4" End Suction Centrifugal Hot Water Pump

The HTW 80 is a patented, unique centrifugal pump specifically designed for high temperature process manufacturing applications using hot water, ethylene glycol, propylene glycol and triethylene glycol. The Tempuflo HTW Series utilizes an isolated seal chamber, which is effectively cooled by both a cooling loop (heat exchanger) and by a fan clamp which couples the unit to the shaft of a standard NEMA C Face frame motor.

The isolator technology combined with the heat exchanger allows the seal cavity to reach a maximum and seal chamber temperature of 170°F (77°C) while the process temperature is at 400°F (204°C). This lower seal temperature greatly increases seal life, which means less down time for the end user.

Discharge port location can be provided as either Horizontal or Vertical position.

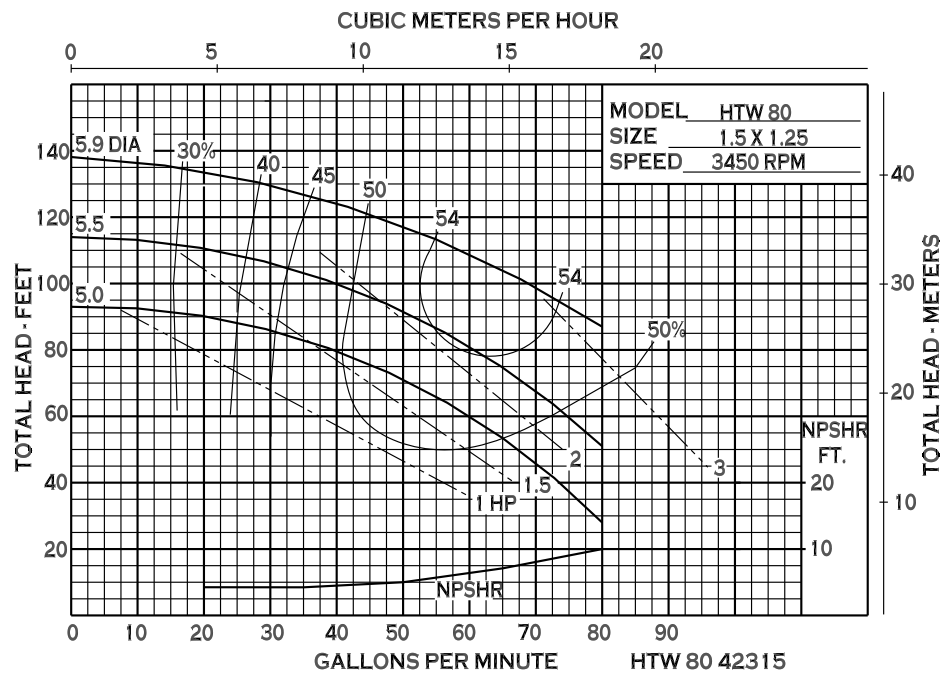
SPECIFICATIONS:

Suction and Discharge	1-1/2" x 1-1/4" NPT or 150# Flat Flange Option
Materials of Construction	Ductile iron
Flow	Up to 80 GPM (18.16 m ³ /h)
Head Feet	Up to 127' (38.7 m)
Impeller	5.9" (149.8 mm) steel, enclosed
Motor	Up to 3 HP (2.2 kW)
Drive Options	Close coupled 56C Close coupled 145TC
Seal	Carbon / silicon carbide / Viton
Temperature	650°F (343°C) max

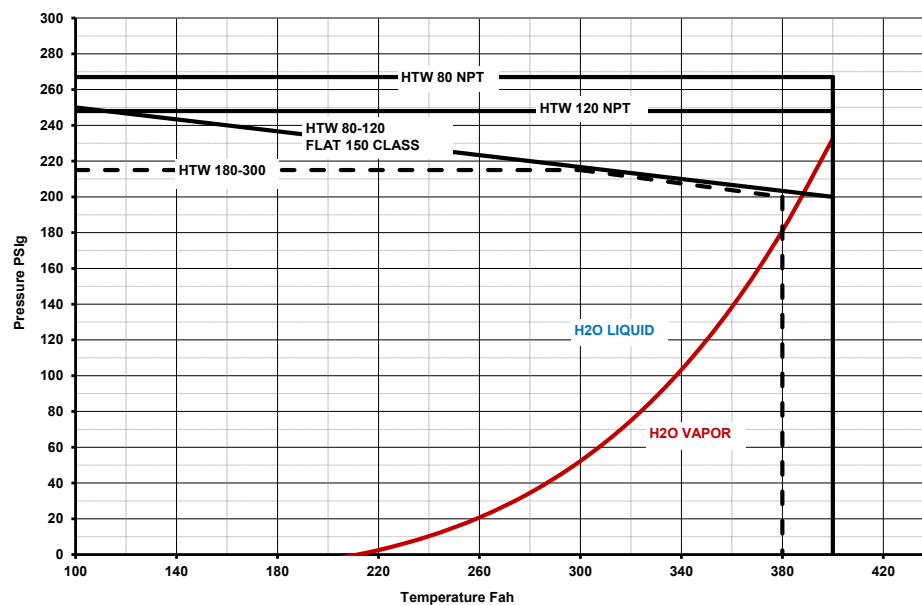
Application:

- Industrial
- OEM

PERFORMANCE CURVES



HTW Pressure Temperature Limits



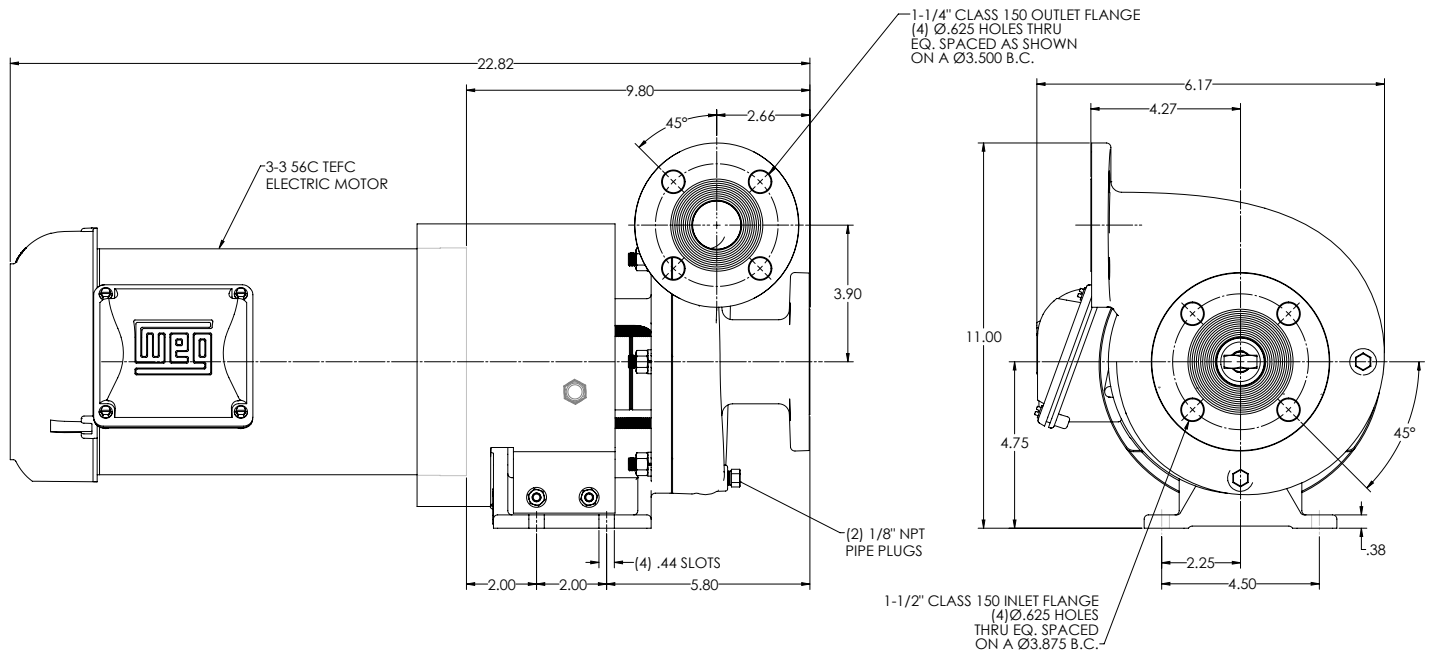


An Ingersoll Rand Business

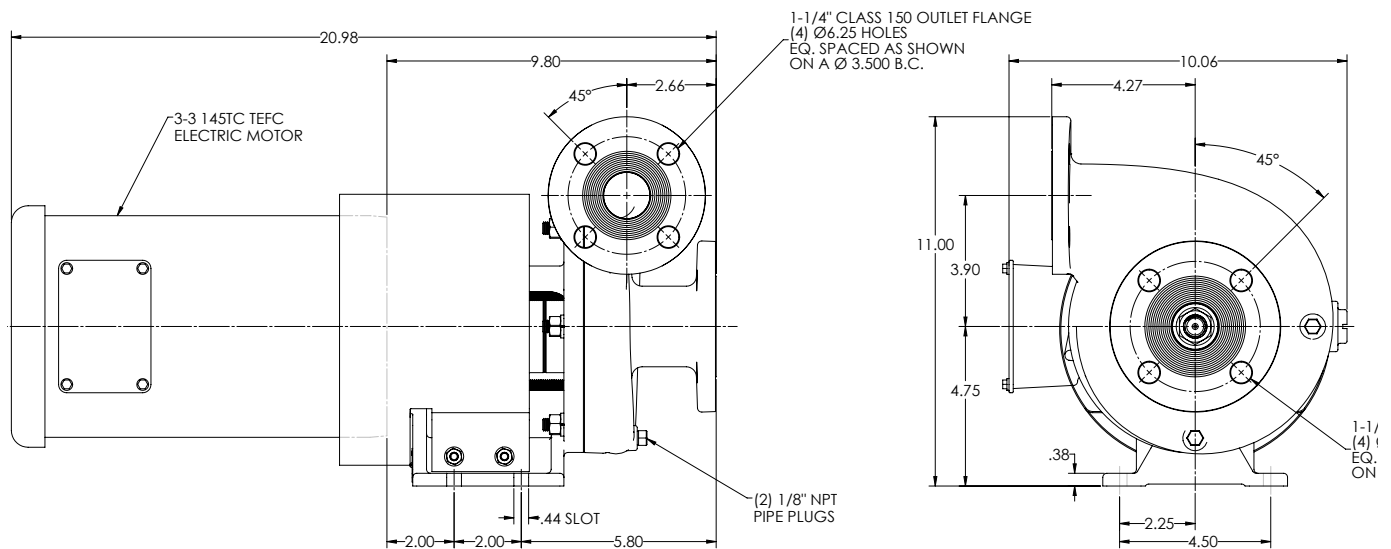
HTW 80

DIMENSIONS

HTW80PMP D:3-3 56C 5.9 FF HD (MP36629)



HTW80PMP D:3-3 145TC 5.9 FF HD (MP36630)



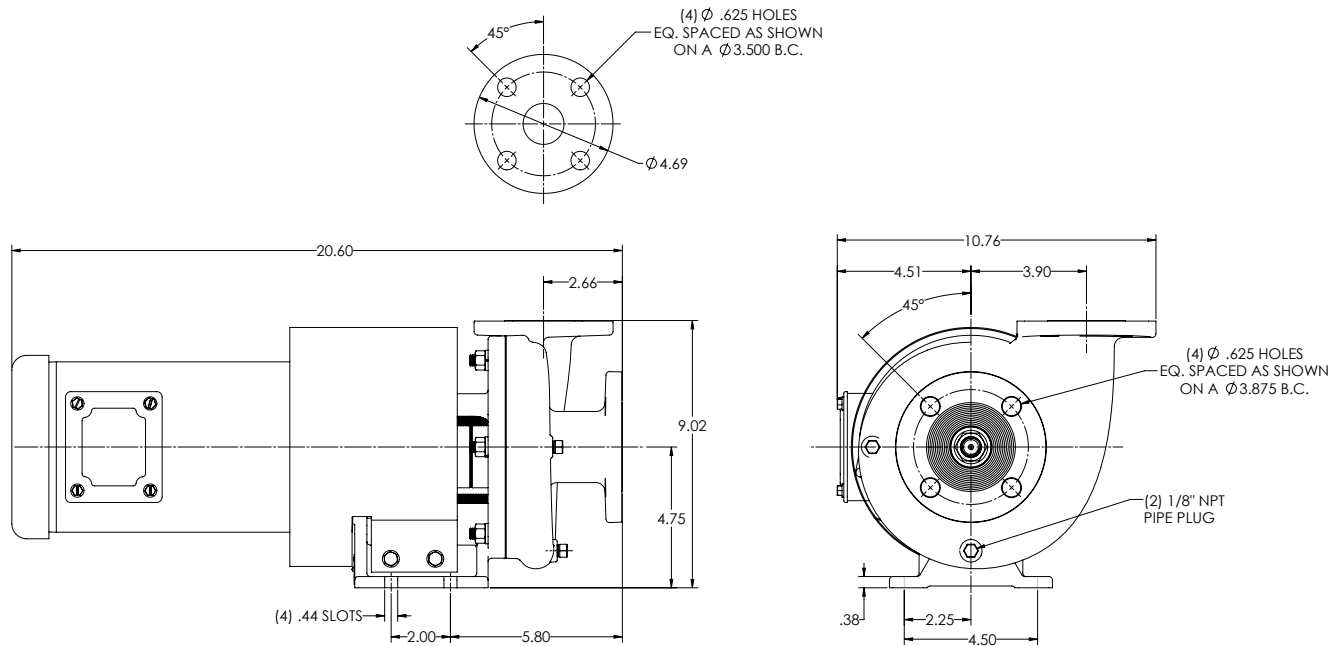
* For complete parts lists and troubleshooting guidance, please refer to the MP Pumps Installation Operation & Maintenance (IOM) Manual.



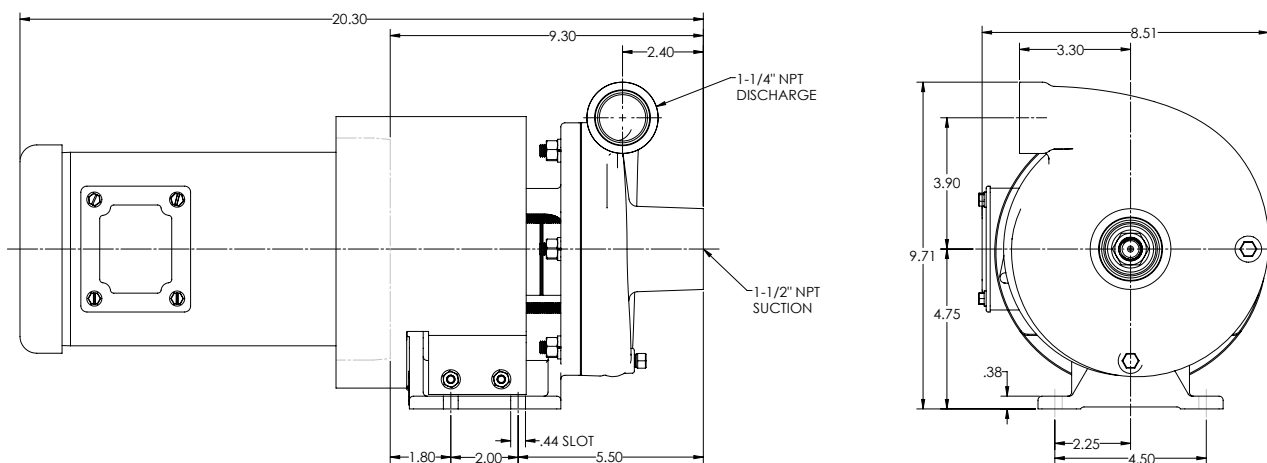
12500 South Pulaski Road
Alsip, IL 60803, USA
Phone (800) 563-8006

DIMENSIONS

HTW80PMP D:2-3 145TC MB 5.5 FF VD (MP50771)



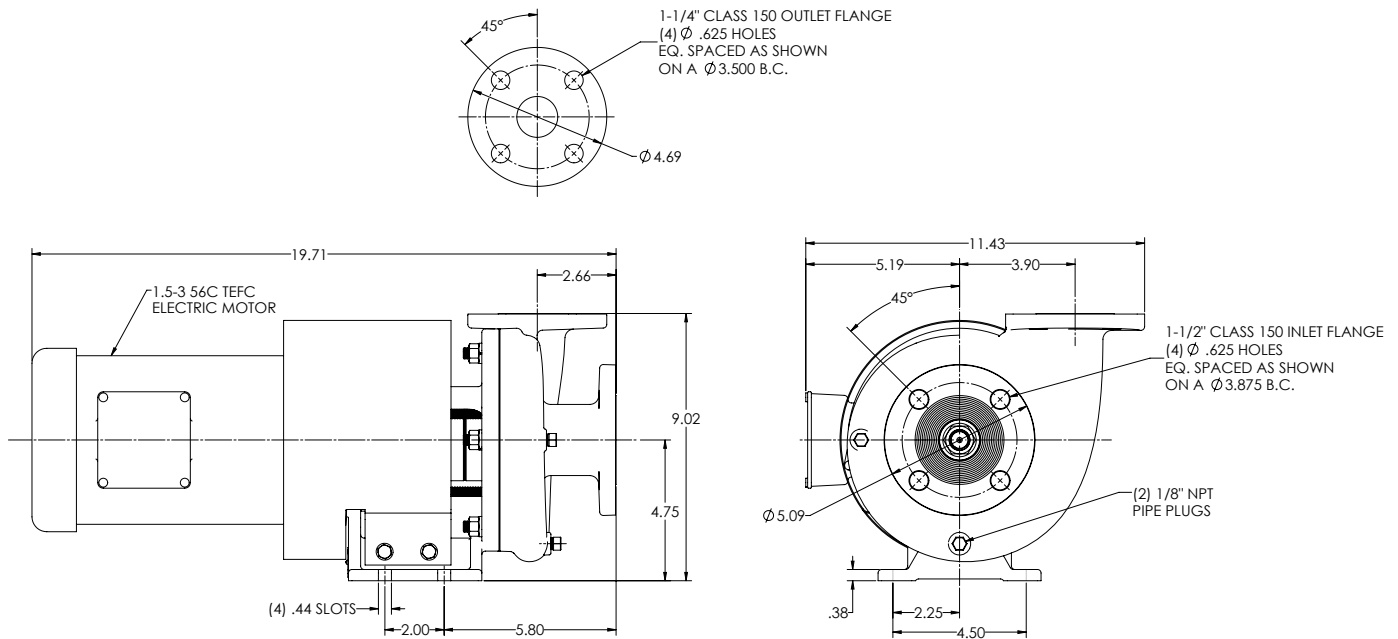
HTW80PMP D:2-3 145TC 5.0 HD (MP39891)



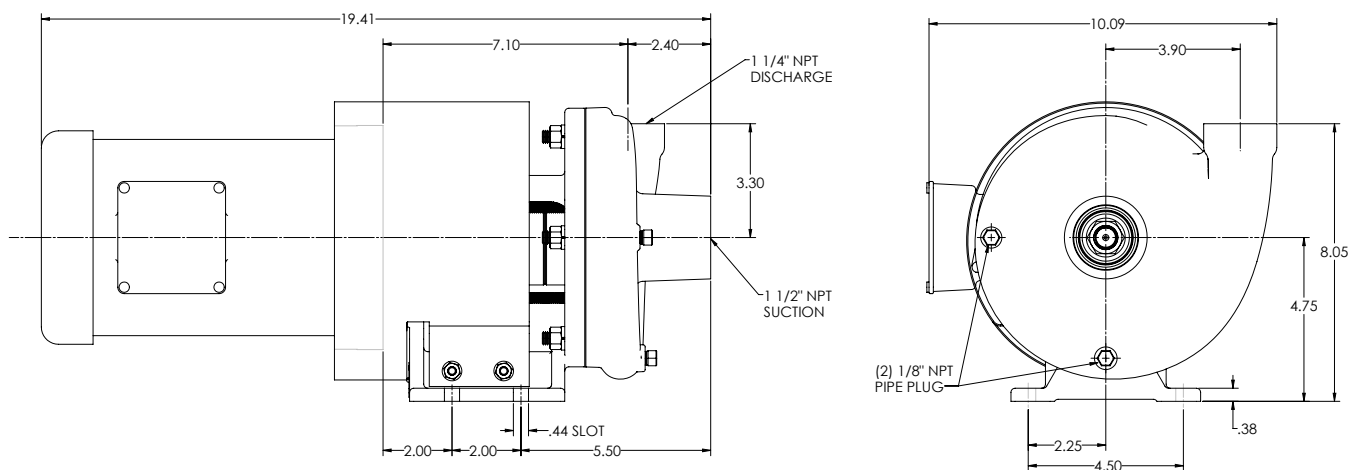
* For complete parts lists and troubleshooting guidance, please refer to the MP Pumps Installation Operation & Maintenance (IOM) Manual.

DIMENSIONS

HTW80PMP D:1.5-3 56C TEFC 5.0 MB FF VD (MP50770)



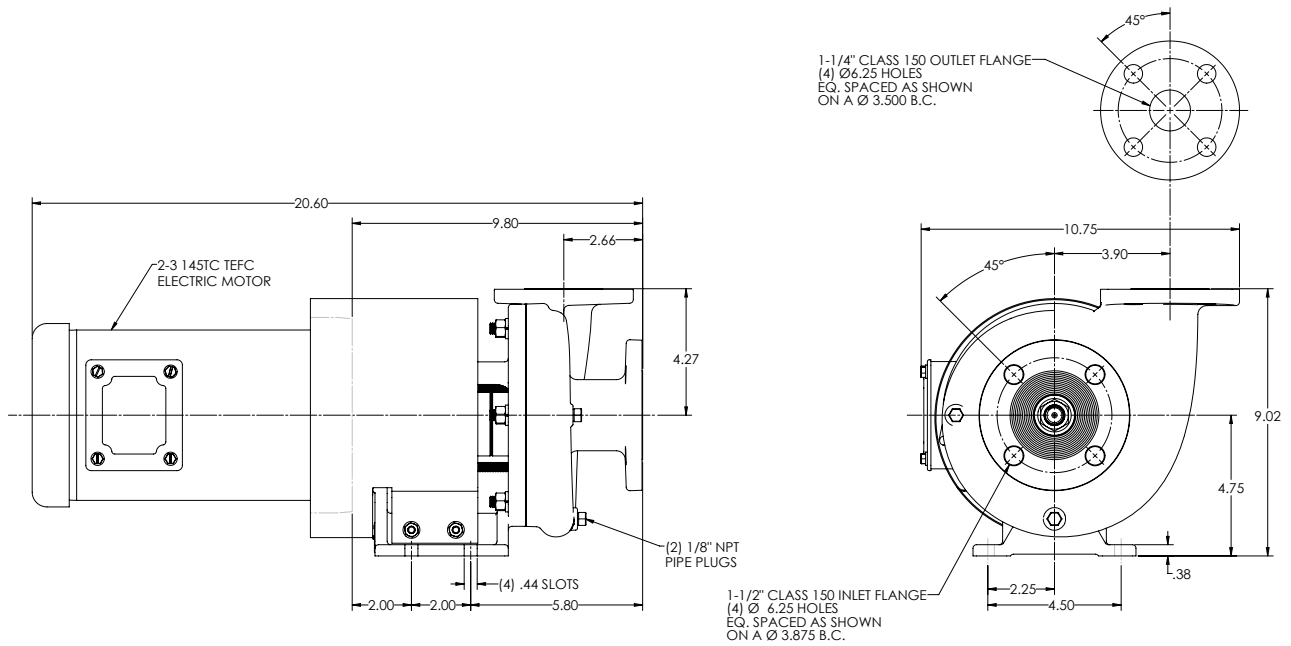
HTW80PMP D:1.5-3 56C 5.0 VD (MP50132)



* For complete parts lists and troubleshooting guidance, please refer to the MP Pumps Installation Operation & Maintenance (IOM) Manual.

DIMENSIONS

HTW80PMP D: 2-3 145TC 5.25 T-2 F48 FF VD (MP50918)



* For complete parts lists and troubleshooting guidance, please refer to the MP Pumps Installation Operation & Maintenance (IOM) Manual.